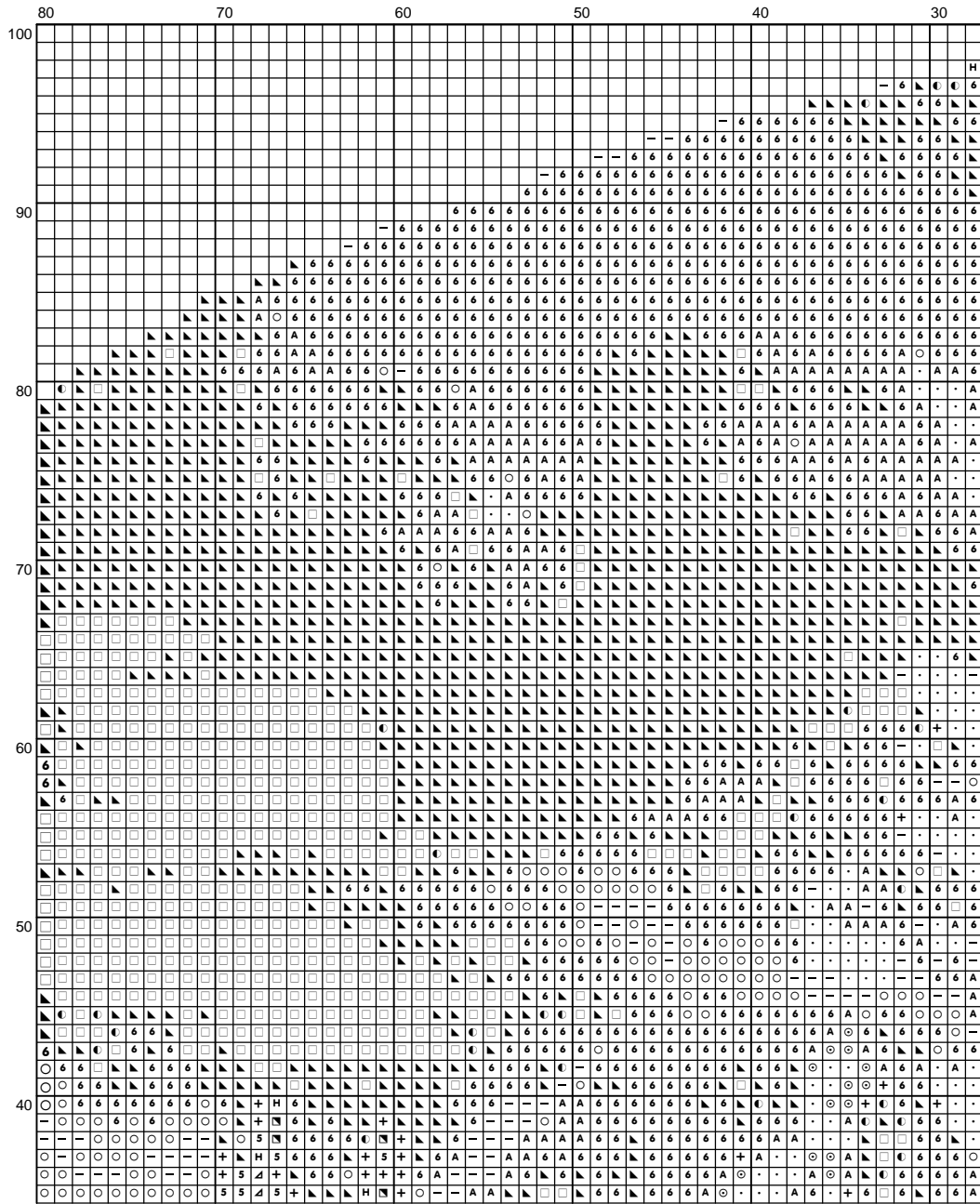
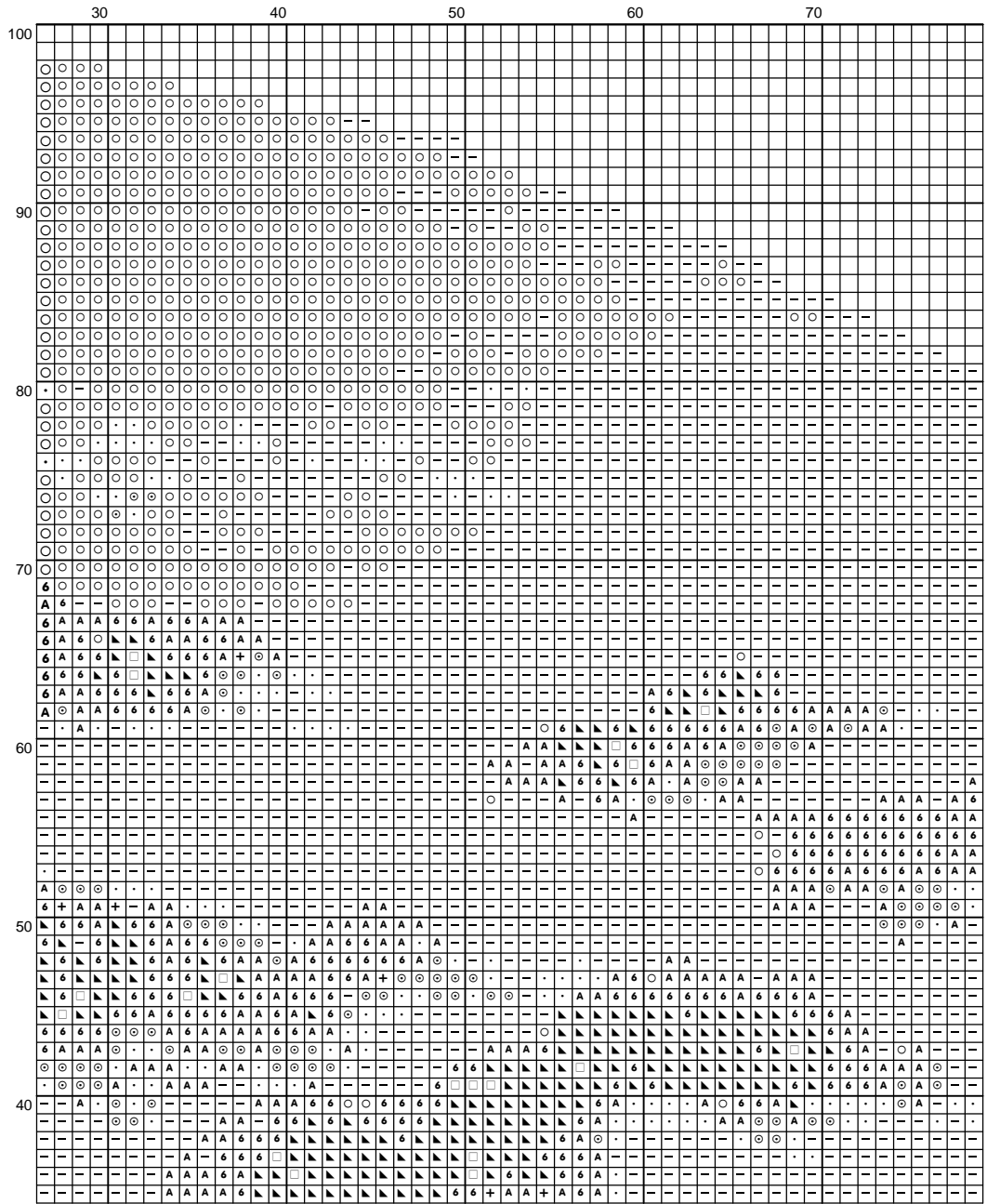
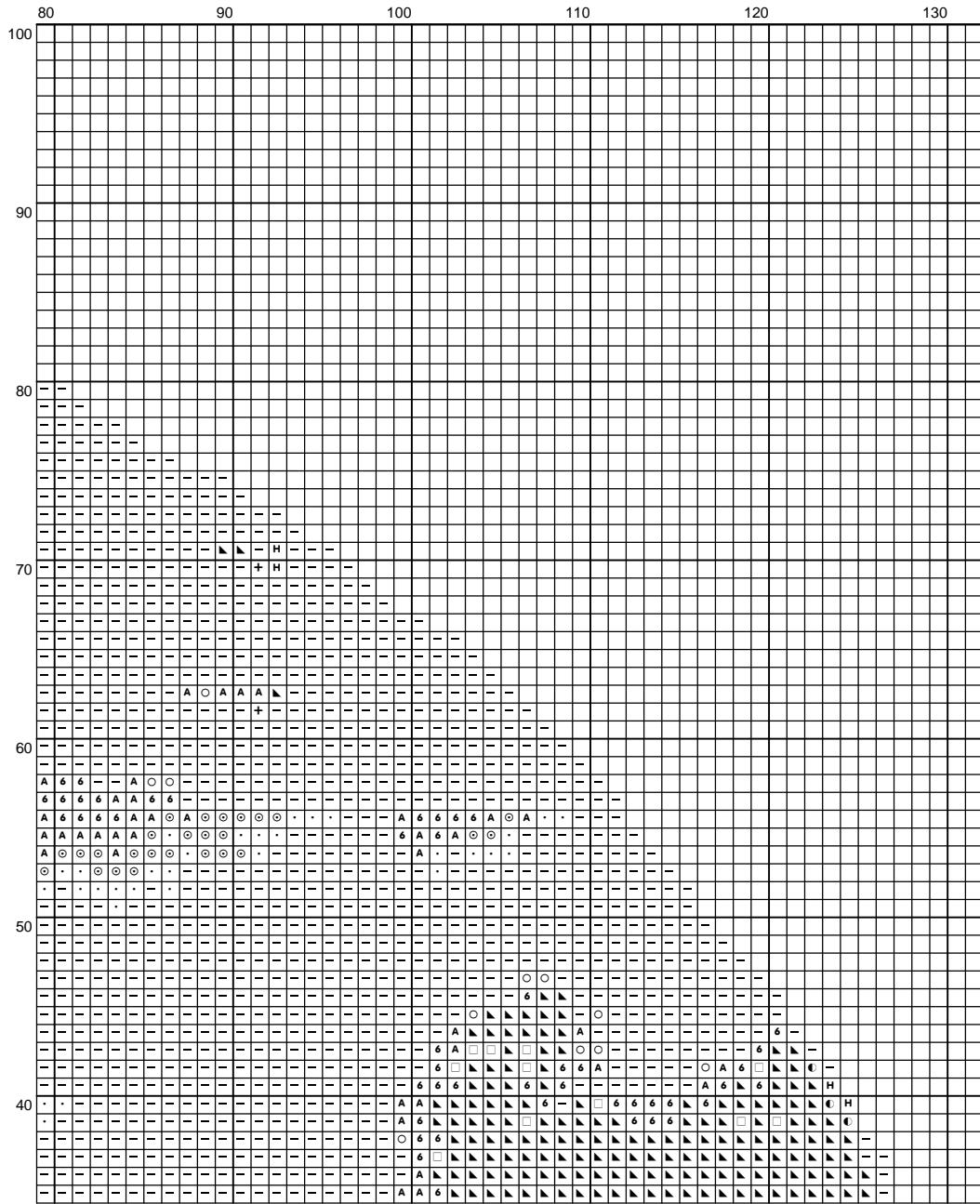


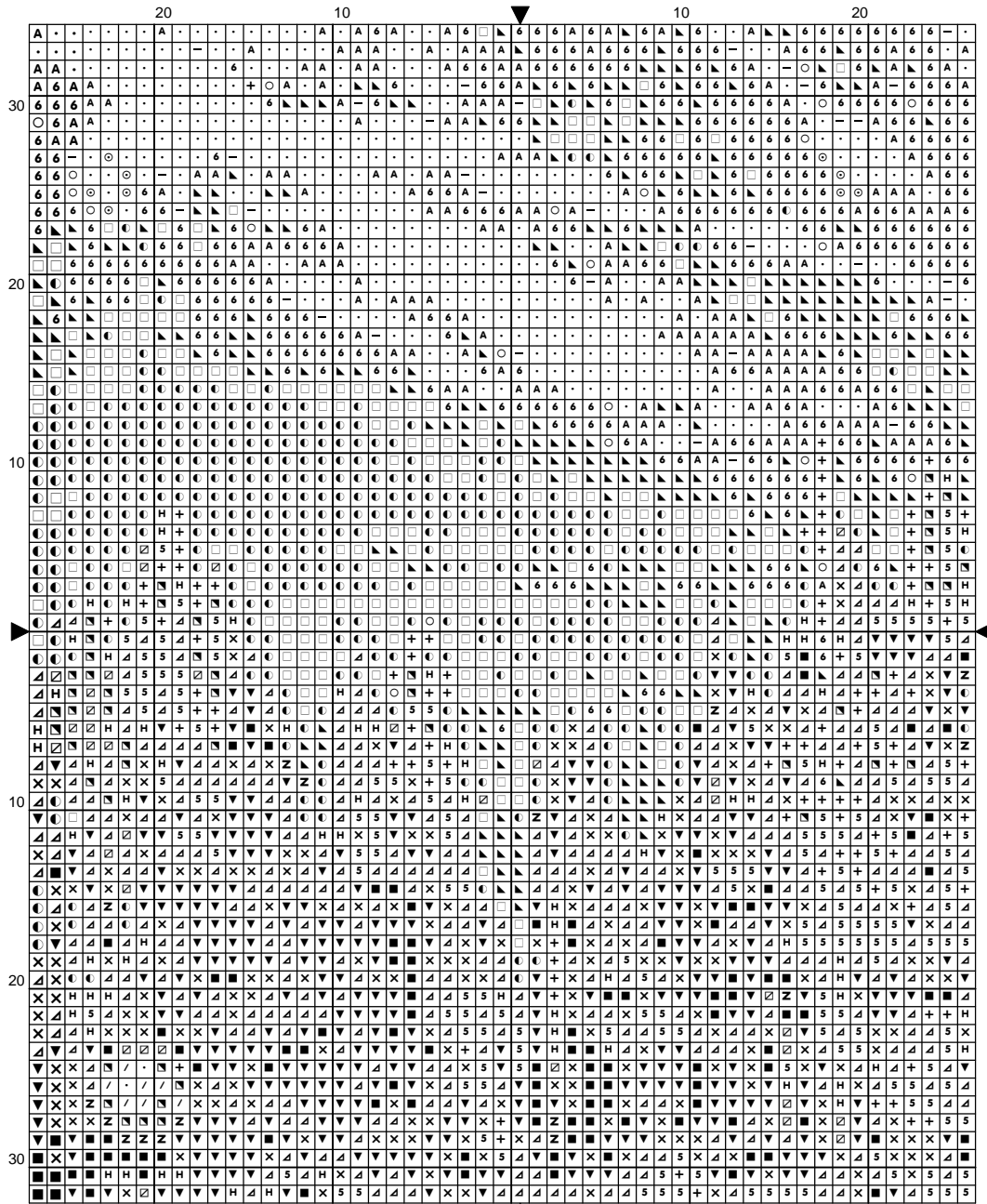
Summer Sunset

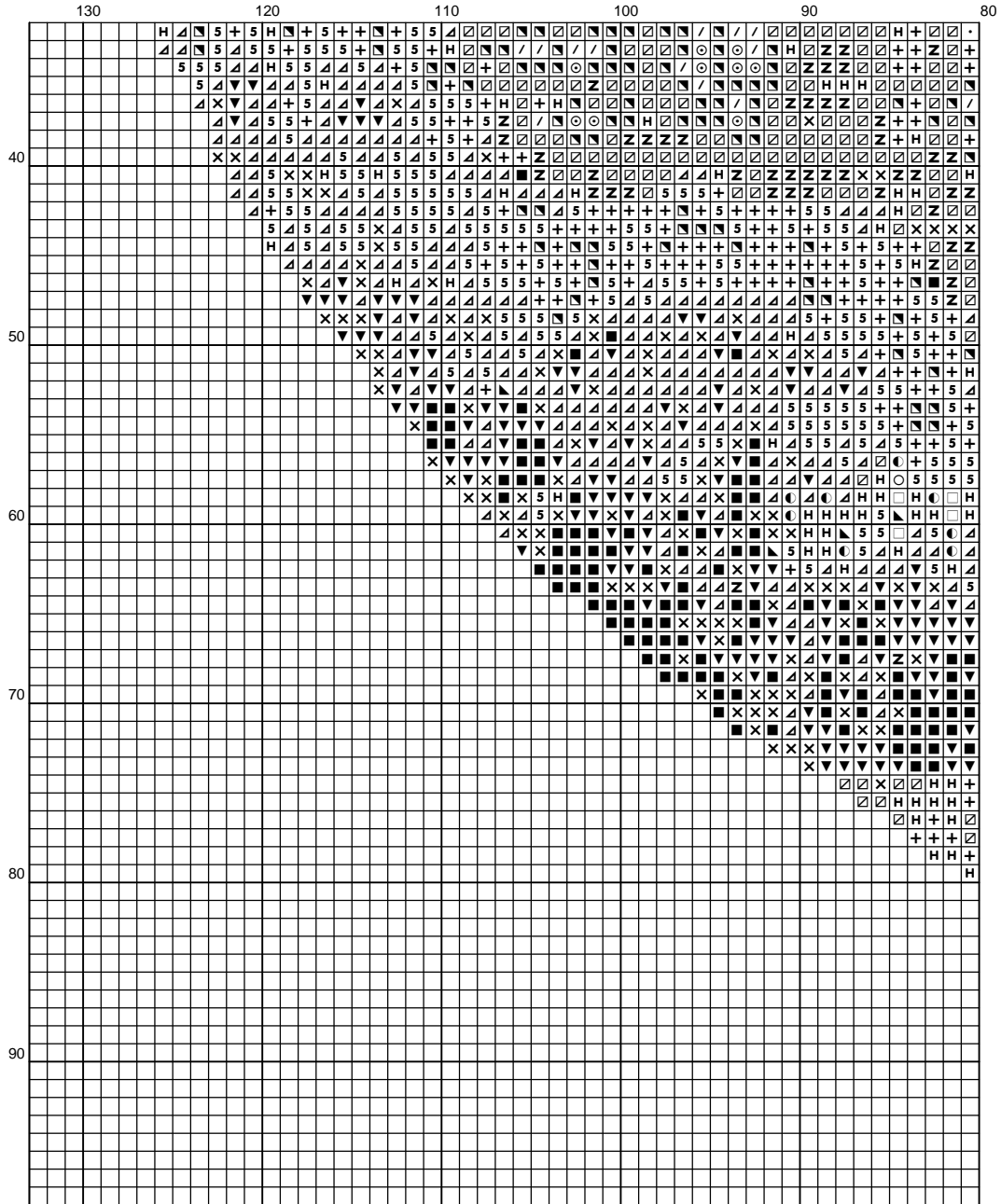


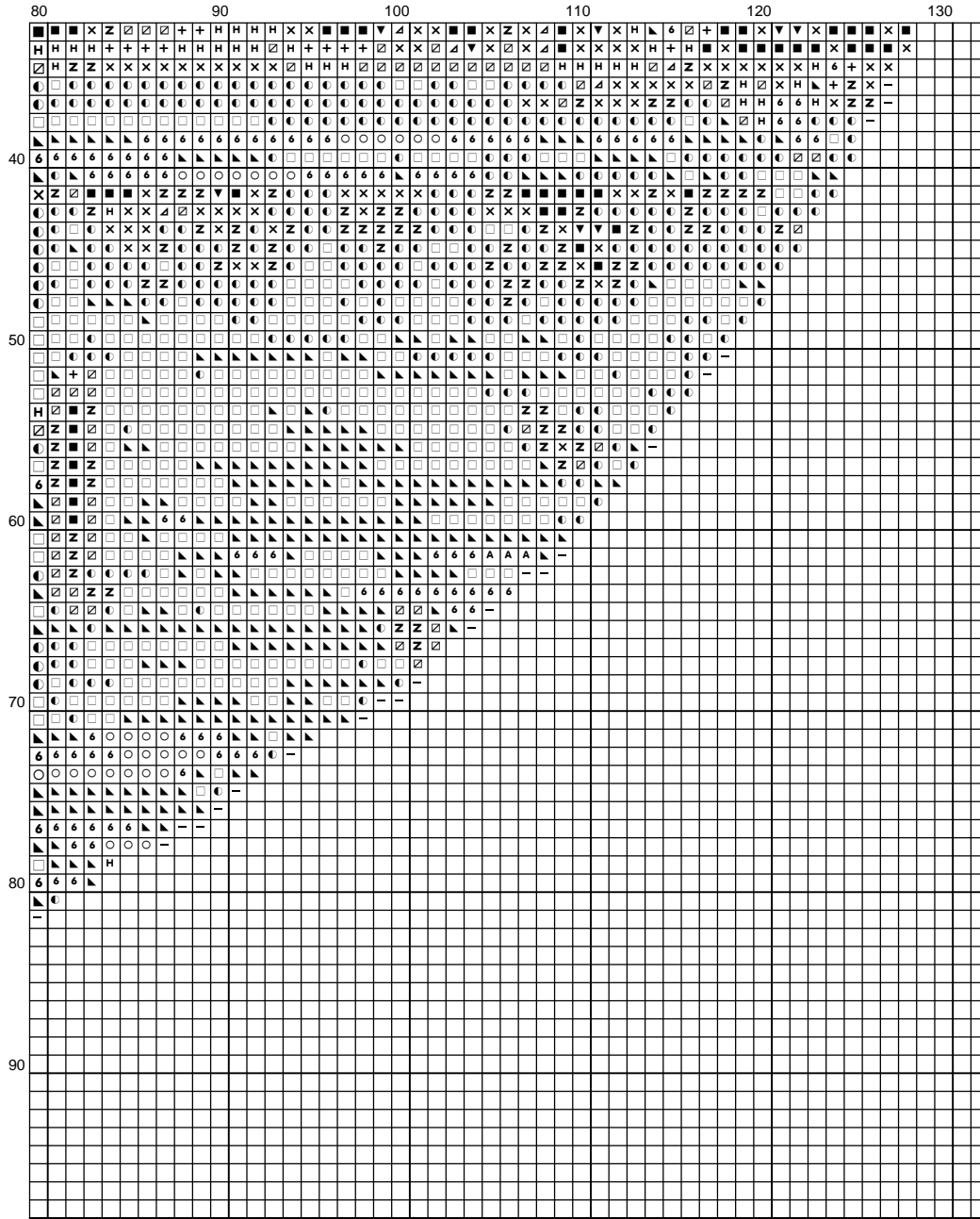












Instructions and Symbol Key for Design "Summer Sunset"

Fabric: 22 count

Stitches: 267 x 200 **Size:** 12.14 x 9.09 inches or 30.83 x 23.09 cm

Colours: DMC

Use 2 strands of thread for cross stitch

<u>Sym</u>	<u>No.</u>	<u>Colour Name</u>	<u>Sym</u>	<u>No.</u>	<u>Colour Name</u>
■	939	Dark navy blue	▼	890	Deep forest green
×	934	Algae green	⚡	938	Espresso brown
▲	937	Moss green	☒	433	Chocolate brown
●	552	Violet	5	470	Olive green
H	840	Hare brown	□	208	Pansy lavender
▣	435	Tabacco brown	▲	553	Amethyst violet
+	3859	Clay red	/	977	Caramel brown
6	209	Lilac	○	210	Light violet
⊙	743	Medium yellow	A	3326	Wildrose
—	211	Pale violet	•	745	Banana yellow

This chart has been designed and printed with our best intentions of being without mistakes. However, the possibility of human error, printing mistakes or the variation of individual stitching does exist, and we regret that we cannot be responsible for this.

Produced using Cross Stitch Professional for Windows www.dpssoftware.co.uk